

CASE STUDY



VESSEL TYPE: PASSENGER VESSELS
TRADING AREA: AUSTRALASIA AND PACIFIC

HEADING: Highlighting potential dangers

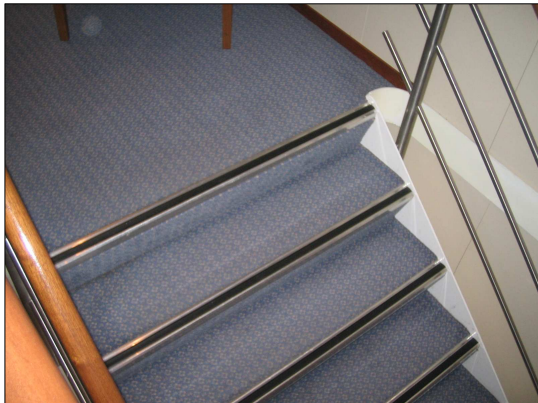
THE INCIDENT:

This case involves a passenger vessel which has been involved with three separate claims incidents.

In all of the cases the passengers concerned have fallen down the same step, situated between the bar and lounge area. In the last incident the claimant fell down the step sustaining a serious injury to their right ankle.



OBSERVATIONS:



The step concerned, which is brown in colour and has a rise of 200mm, separates the bar from the lounge area. The flooring in the bar is wooden and in the lounge is blue carpet. Therefore a contrast in floor colour exists between the two areas making the step visible from the forward and aft directions.

In these cases, even though the step was a visibly different colour, the incidents still occurred and therefore it is recommended that periodically all changes in height are reviewed for adequate lighting, highlighting and safety signage. If signage is required it should be placed on or adjacent to changes in levels.