

BRIDGE

Master to remain in command and oversee actions of the pilot/tugs and confirm agreement with the pilot's plan

To advise on manoeuvring characteristics of the vessel

To stay focused during the operation and not 'switch off' just because the pilot is on board



On board mooring teams to provide updates on vessel's position including perceived distances

Bridge team (in liaison with the pilot) to constantly update mooring teams on the details of the operation including tug/shore side mooring team's requirements

ON BOARD MOORING TEAMS

Eyes for the pilot and bridge team as the mooring deck is not always visible from the bridge

Designated person to confirm with the bridge team/pilot when the tug is secured. If appropriate the visual 'all fast' signal to be shown to the tug

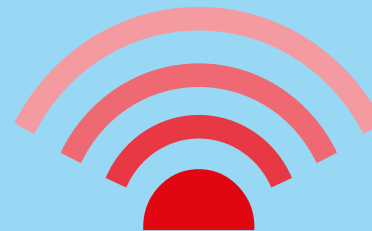


Bridge team and pilot to ensure that communication is understood taking into account any language barrier and always using the appropriate vessel's name. Efficient master/pilot exchange (MPX) must be embedded into any pilotage operation

Bridge team to inform pilot of the vessel's operating particulars and anything out of the norm. Pilot card to be discussed

Pilot to reaffirm to the master/bridge team the operation and any special prevailing situation. Pilot's passage plan to be made available to the bridge team and discussed. Transparency is key to an efficient operation

Roles of the bridge team to be clearly communicated to the pilot e.g. plotting positions, VHF comms



COMMUNICATION IS KEY

SPEAK UP AND QUESTION DECISIONS

The on board mooring team and tug are to ensure that proficient instructions and communications are maintained including 'All fast' and 'Line clear'. As the tug master has multiple ongoing responsibilities such as monitoring the tug's interaction with the vessel, the towline, tug's crew and tug master may also control the tow winch themselves



SHIPOWNERS

[@ShipownersClub](#)

www.shipownersclub.com

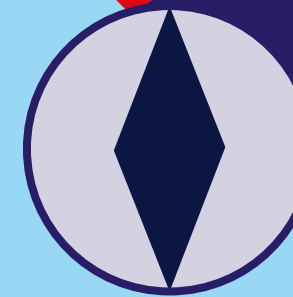
[The Shipowners' Club](#)

PILOT

Experts of the port

Speak the local language and communicate with tugs, shore mooring gangs etc

Carry out risk assessments before and during the operation



Pilots are encouraged to transit back to base on the tug, where feasible and practical, for an operation debrief

Tug masters should be encouraged to experience a pilotage from the bridge of the vessel to be assisted

Continual updates and approval of the operation are to be communicated so as to keep all parties appraised

TUG

Vital to the manoeuvring of the vessel and the monitoring of its movements through the water. Integral to the operation

As a key party, communication is vital to all groups involved with the operation

Should always repeat the pilot's order prior to carrying out the manoeuvre

